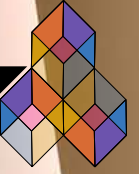


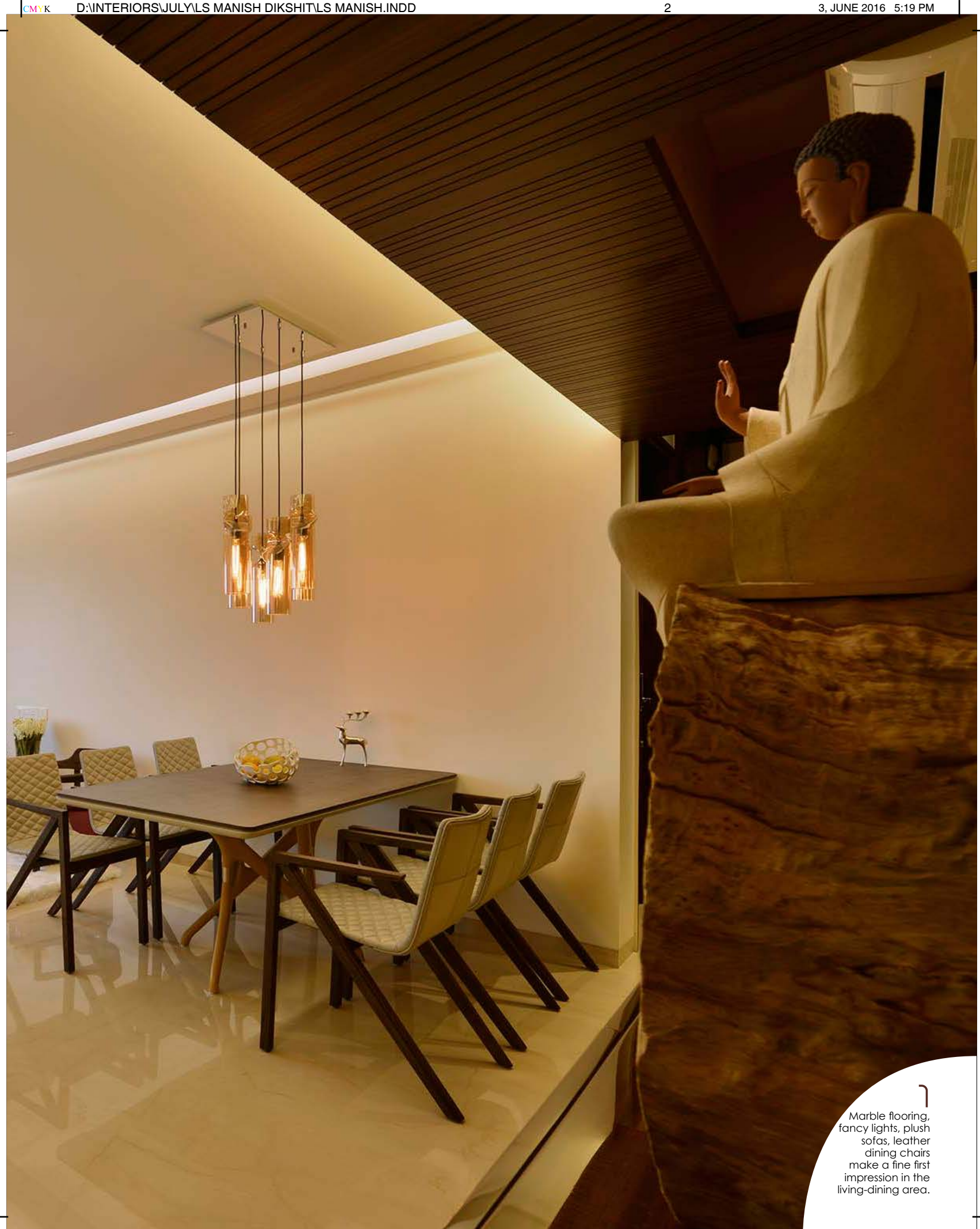
LIFESTYLE



CONTEMPORARY CHIC

MUMBAI-BASED **AUM ARCHITECTS** DILIGENTLY DESIGNS A SPACIOUS-LOOKING AND AESTHETIC HOME FOR A FAMILY OF FOUR IN BANDRA, MUMBAI.

Text: Marina Correa **Photographs:** Prashant Bhat



Marble flooring, fancy lights, plush sofas, leather dining chairs make a fine first impression in the living-dining area.

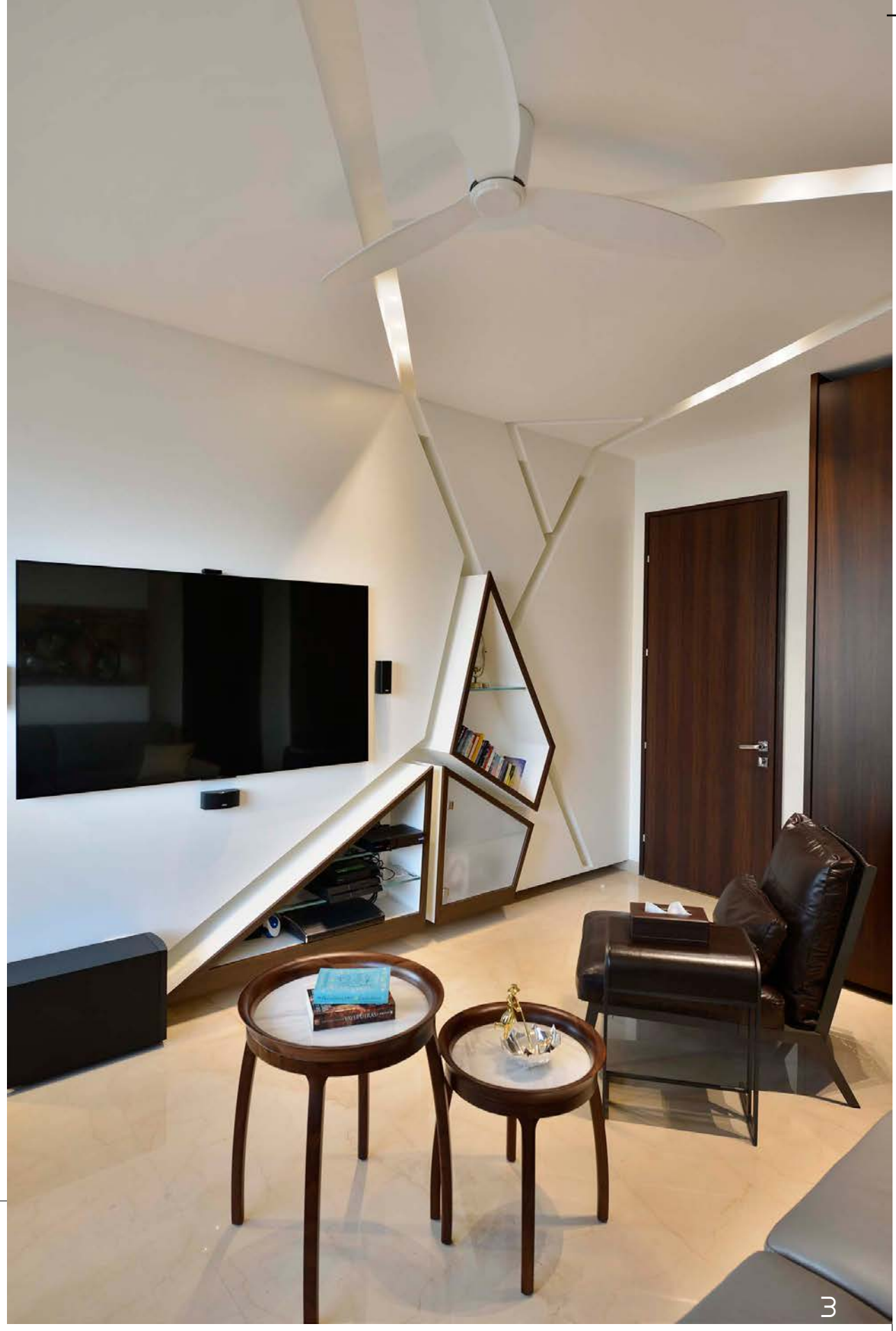
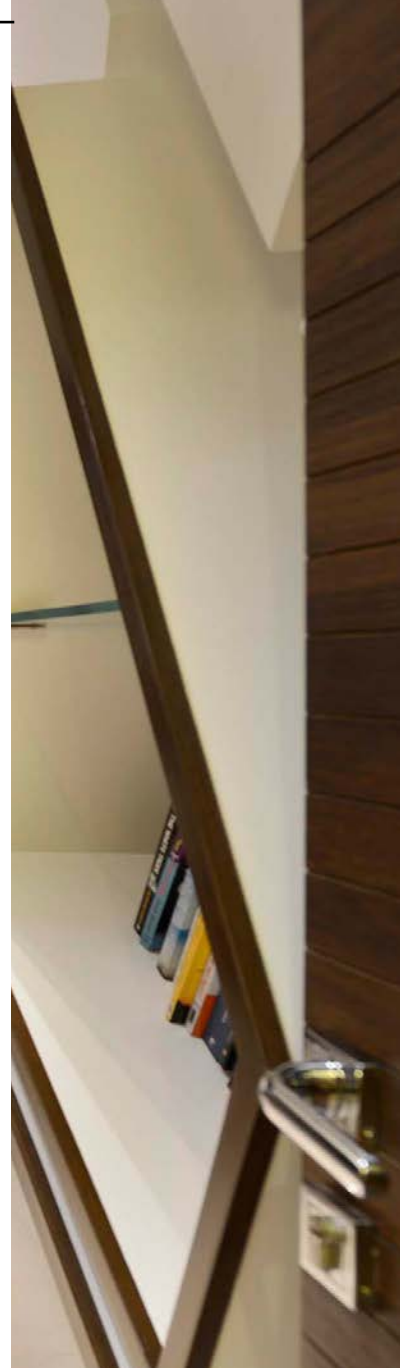


2

Minimalist and contemporary in style, the Mansukhani residence located in Bandra, Mumbai, exudes a warm and inviting ambiance. Designed by **Aum Architects**, the 4BHK home was converted into 3 BHK with a lounge area that was carved out for socializing as per the client's wishes. Despite a tight 1,425 sq. ft. area, the firm has skillfully made the home look and feel spacious.

Various methods help augment the volumetric dimensions. For instance, by keeping the rooms clutter-free, maintaining a simple geometry in furniture consisting of clean straight lines, and creating an illusion of 'a floating feel' with respect to furniture at different spaces. Furthermore, all wardrobes work on an in-line mechanism principle which lends a seamless look and also doubles up as a sliding shutter. In addition, since all the wardrobes come with full-height shutters, the rooms take on an illusion of a higher height.

Opting for a simple schematic of black, white and neutral shades, the home accommodates living-dining, kitchen, master bedroom, parents' bedroom, guest bedroom and lounge. However, bold colours like mustard yellow in certain areas break the monotony of the neutrality.



3

2
Grey tones dominate the lounge area where an attractive Turkish lamp hangs over a bar console in one corner.

3
Asymmetrical patterns on the walls and ceiling impart a youthful vibe to the lounge.



4



6

The living room is done up formally with a four-seater cream coloured leather sofa placed on the opposite side of the dining area to create a balance in the room as the client did not want a LCD in this space. A fluffy end-to-end rug, a brass floor lamp, deep red upholstered chairs and an eye-catching peacock artwork beautify the living area.

The dining area is kept light and elegant with a sculptural table and elegant chairs. The plush dining chairs are leather upholstered; a glass hanging light adds glamour and completes the look.

Adjacent to the dining area is a small *mandir* made of white onyx and water jet cut *jaali*. This delicate and intricate feature also acts as a partition, obscuring the view from the main door. Placed on a customized, glossy-finished lamination-over-veneer console, a Buddha statue exudes a calm vibe. The mustard wall and ceiling panel acts as accents and add warmth to the space.

A bar unit, television and music system is set within the lounge making it a fully loaded social and entertainment zone. The wall treatment where the LCD unit is mounted has in-built asymmetrical niches for CDs, books and knick-knacks turning it into an attractive design feature. Lines from this wall panel continue into the ceiling making it a holistic design statement. A Turkish lamp hangs over a tall storage bar console in one corner whilst a floor-to-ceiling mirror in the opposite corner amplifies the spatial volume.

One side of the master bedroom is done up in grey walls whilst the other has deep wooden tones of panelling; an attractive grey and mustard yellow patterned headboard complements the bedcovers.

A 'birds in flight' mural becomes the focus-locus in the room. Camouflaging utility with the aesthetic **Ar. Manish Dikshit**, co-principal, **Aum Architects**, has diligently provided a set of stacked boxes to store the client's wife's large book collection which also doubles up as a seat by the window or as a desk top. A console finished partially in white lamination and veneer with semi-glossy melamine polish takes on a functional yet aesthetic look.

4

The parent's room exudes a simple and cool palette of materials and colours.

5

Yellow used on the headrest and bedcovers, infuses oodles of zest and energy into the master bedroom.

6

Pastel colours and simple decor characterize the guest bedroom.

5



Clean, spacious and airy are defining features of the kitchen.

Similarly, a set of wooden lights aligned parallel to the bed with open filament bulbs of varying shapes feels more like an art work than a piece of utility.

The wall aligned black-tinted glass wardrobe partially reflects the surroundings and exudes a seamless look. The full-length mirror used for the dresser and strategically placed near the window brings in views of the exteriors while making the room appear larger than it really is.

The same formula is followed in the parent's bedroom where the dresser is placed near the mirror. A light coloured blue and white palette wraps the room and makes it a serene oasis. Since the client did not want handles to be seen, they were merged with the design of the wardrobe shutters.

White rules the guest bedroom with a white lamination wardrobe; a fawn coloured custom-made bed complements the side bench whilst fixed above the white side tables are delicate ring-like wall bracket lights that lend lightness to this space.

This overall chic but carefully crafted warm and sophisticated ambience is defined by select lighting that adds the final flourish — a touch of glamour accentuated by smart spatial enhancers. ■



AR. MANISH DIKSHIT

Aum Architects is one of the leading consultants in architectural and interior design services in India and around the world. They have spearheaded over 120 projects for eminent clientele spanning across 10 countries including UAE, Singapore and Spain.

AUM ARCHITECTS

A 20, Antophill Warehousing Complex
Barkatali Naka
Imax Road
Wadala (E)
Mumbai 400 037
22 2418 3633/91 672 26290
aumarchitect@gmail.com/info@aumarch.com
www.aumarch.com